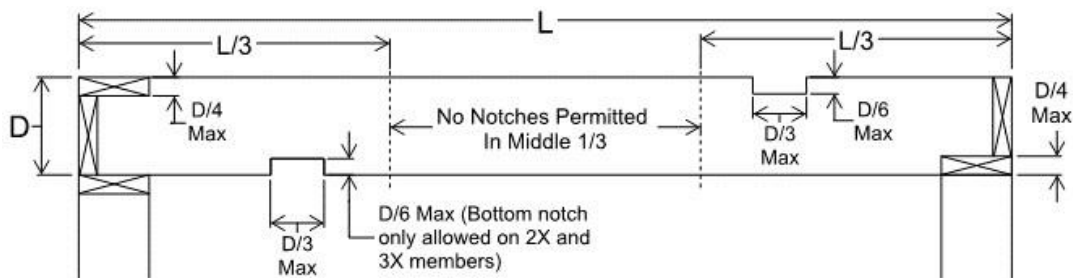


## Notching and Boring of Framing Members

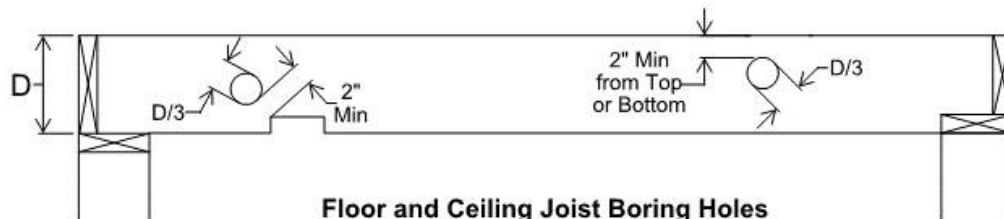
This tip sheet reflects code requirements of the 2021 International Residential Code (IRC) with Washington State Amendments for light wood framing.

### The following figures apply to dimensional lumber only.

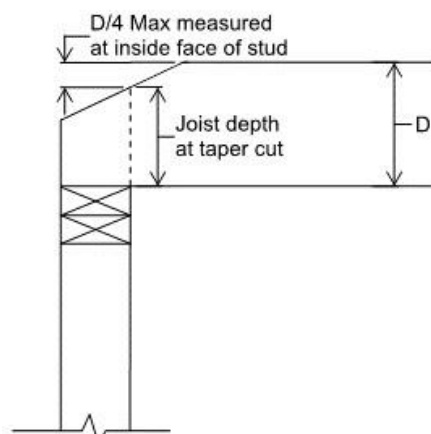
Cuts, notches and holes bored in trusses, structural composite lumber, structural glue-laminated members, cross-laminated timber members or I-joists are prohibited except where permitted by the manufacturer's recommendations or where the effects of such alterations are specifically considered in the design of the member by a registered design professional. (IRC R502.8.2)



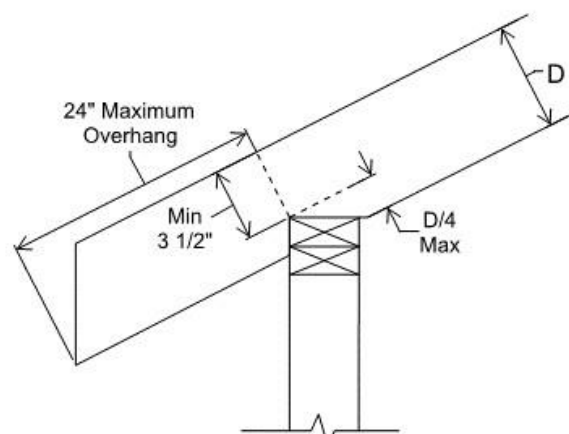
**Floor and Ceiling Joist Notching**



**Floor and Ceiling Joist Boring Holes**



**Ceiling Joist Taper Cutting**



**Rafter Notching**

Figure 1: Floor Joists, Ceiling Joists, and Rafters (per IRC R502.8 and R802.7)

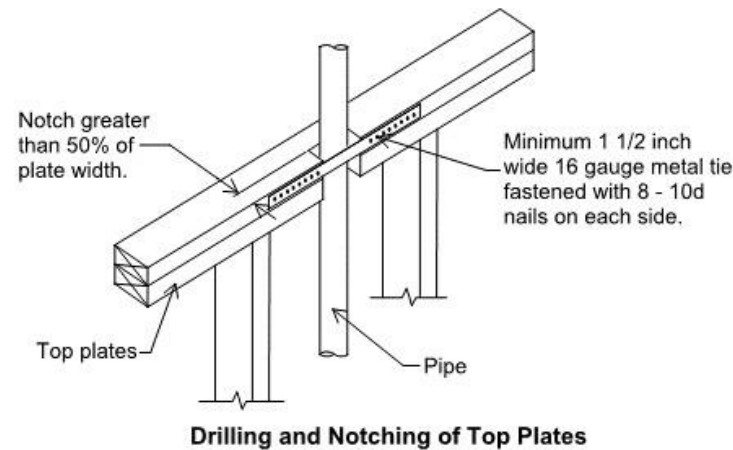
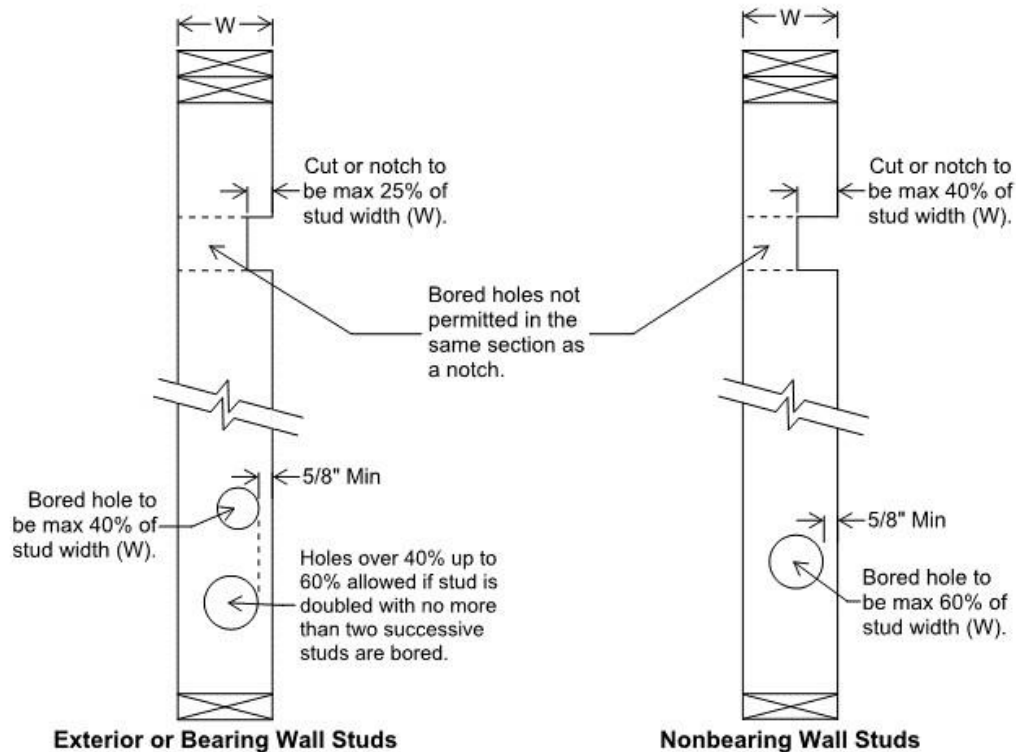


Figure 2: Studs and Top Plates (per IRC R602.6)

- Field-cut ends, notches and drilled holes of preservative-treated wood shall be treated in the field in accordance with AWPA M4. (R317.1.1)

If your project is in a Wildland-Urban Interface or Intermix area, and you are using exterior fire-retardant-treated wood, field-cut ends, notches and drilled holes shall be treated in the field in accordance with the manufacturer's instructions.