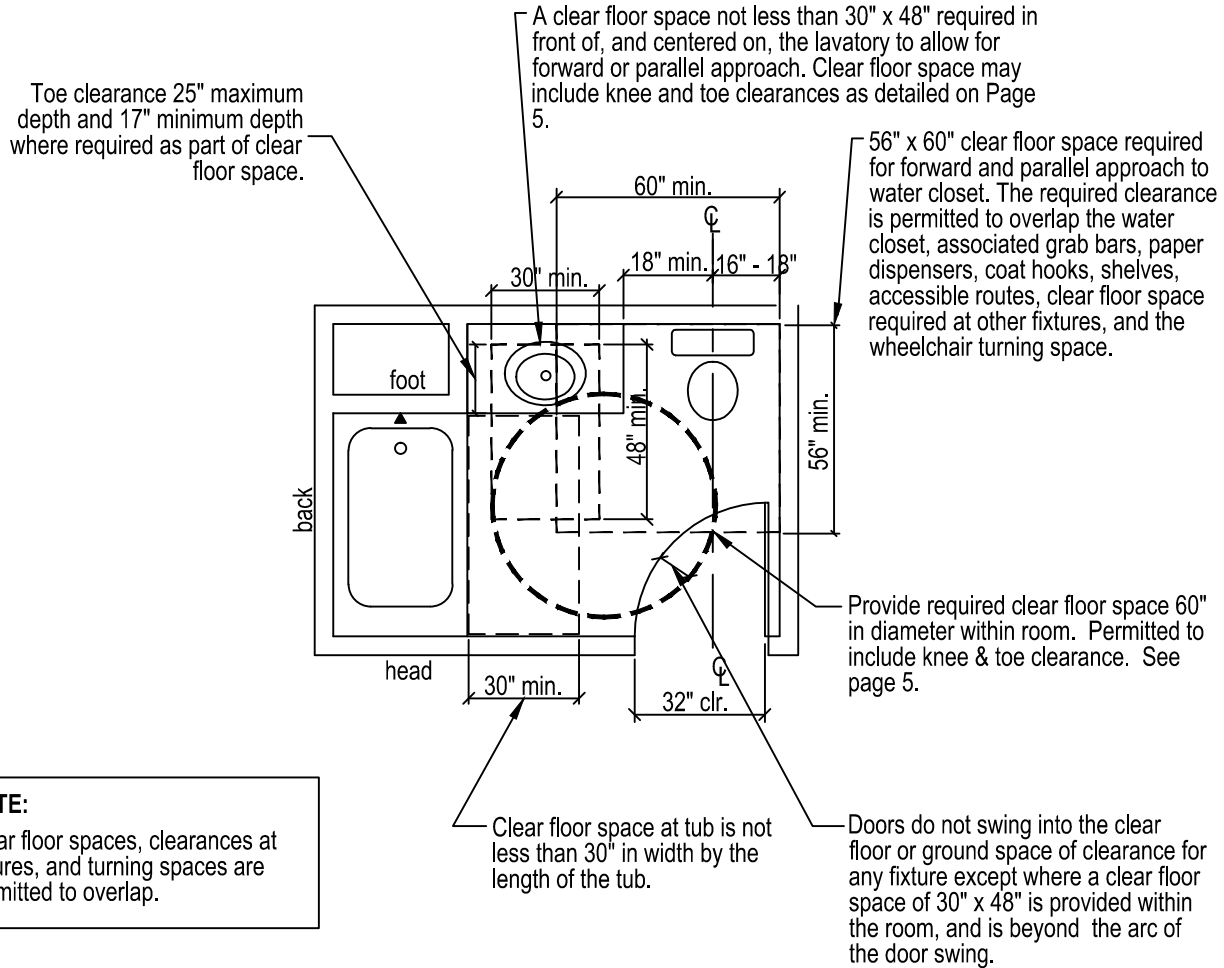




2012 Codes

In Groups R-1, R-2, and R-4: When buildings have 4 or more dwelling or sleeping units intended to be occupied as residences, each of these units must be a Type B Unit. A minimum number and/or percentage of these units will be Type A Units per 2012 International Building Code (IBC) 1107.6.

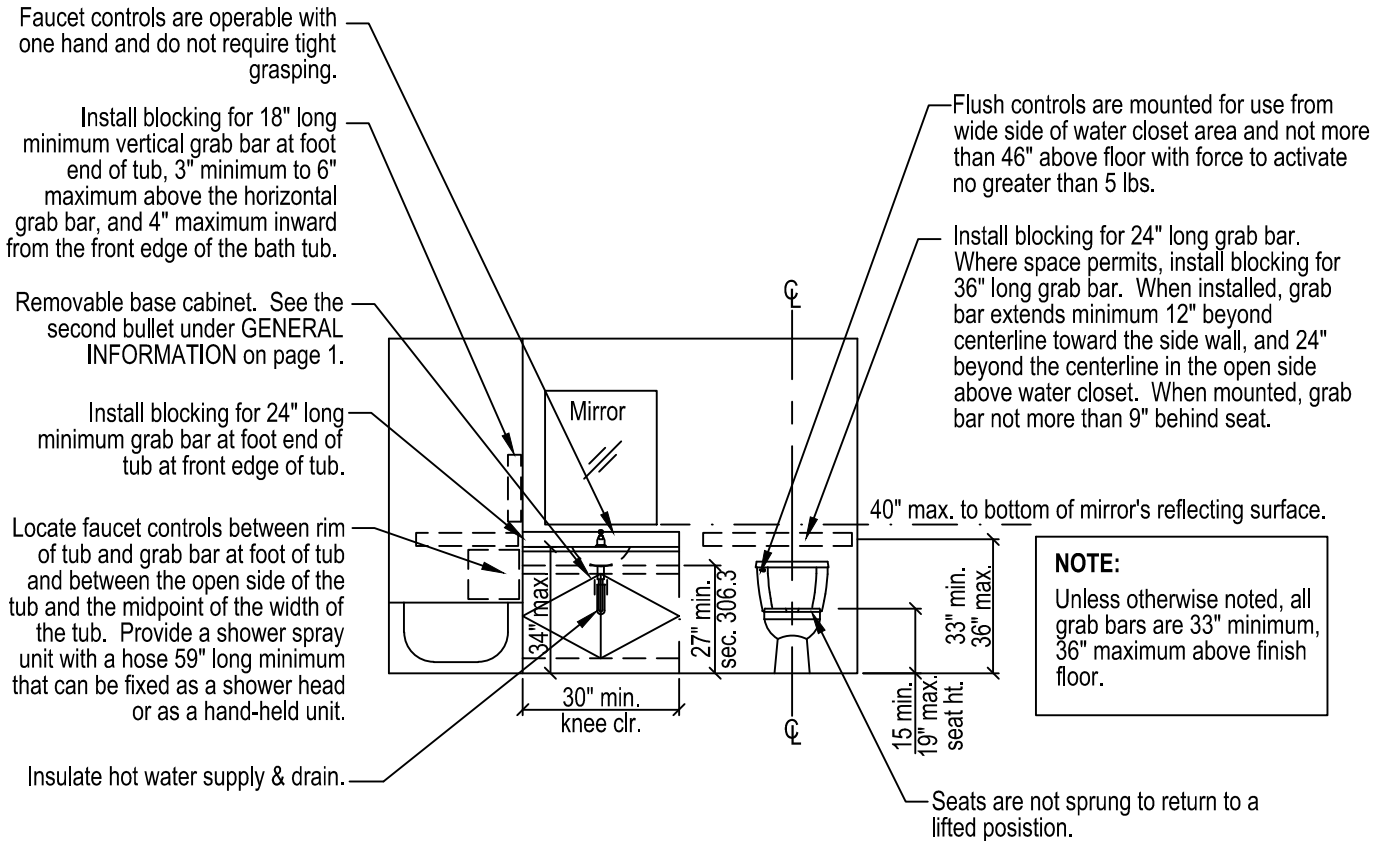


**NOTE:**  
Clear floor spaces, clearances at fixtures, and turning spaces are permitted to overlap.

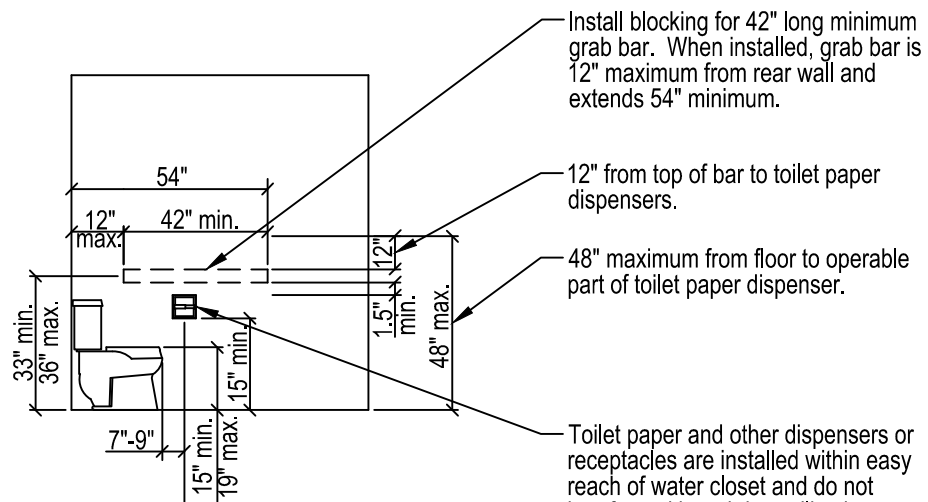
**Type A Unit Floor Plan**

**GENERAL INFORMATION:**

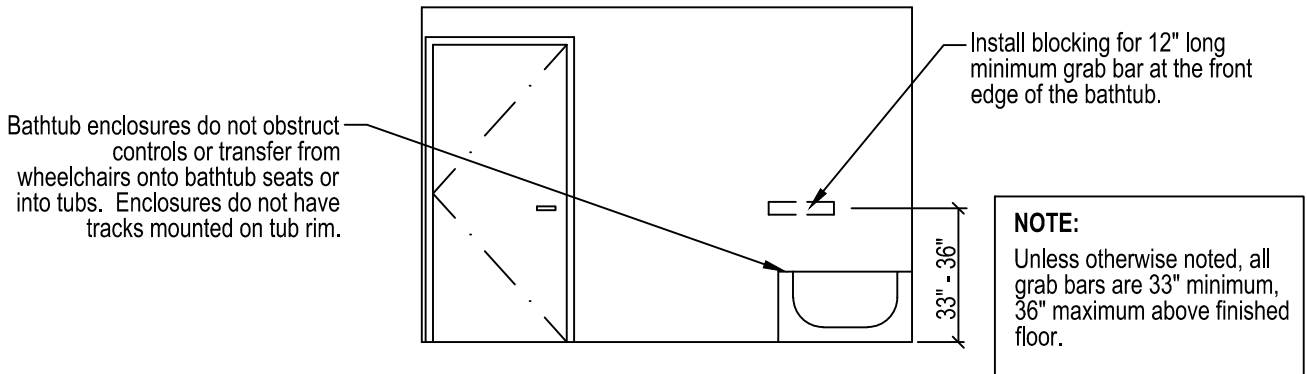
- Cabinets and shelving can be installed underneath counter space or lavatories provided that it can be removed without removal or replacement of the lavatory, the floor finish extends under such cabinetry, and the walls behind and surrounding the cabinetry are finished.
- All doors on accessible routes have a clear opening of 32" minimum, measured from the face of the door, when open 90% to the door stop. See Tip Sheet 14 Accessibility and Door Clearance.
- Thresholds, if provided, are 1/2" high, maximum.
- Grab bars: 1-1/4" to 2" in diameter, or the shape provides an equivalent gripping surface and is capable of supporting 250 lbs.
- For code requirements refer to:
  1. Chapter 11 of the 2012 IBC
  2. Appendix Chapter E, Sections E101 - E107
  3. ICC / ANSI A117.1 - 2009



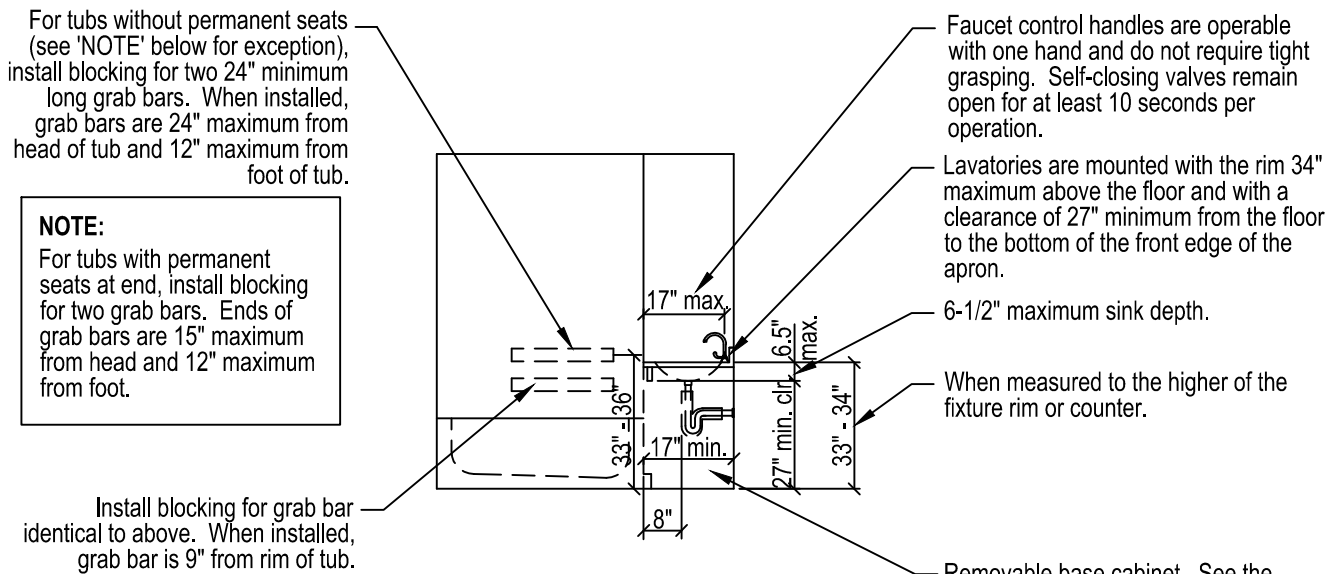
**North Wall Interior Elevation  
(Bathtub Control end wall)**



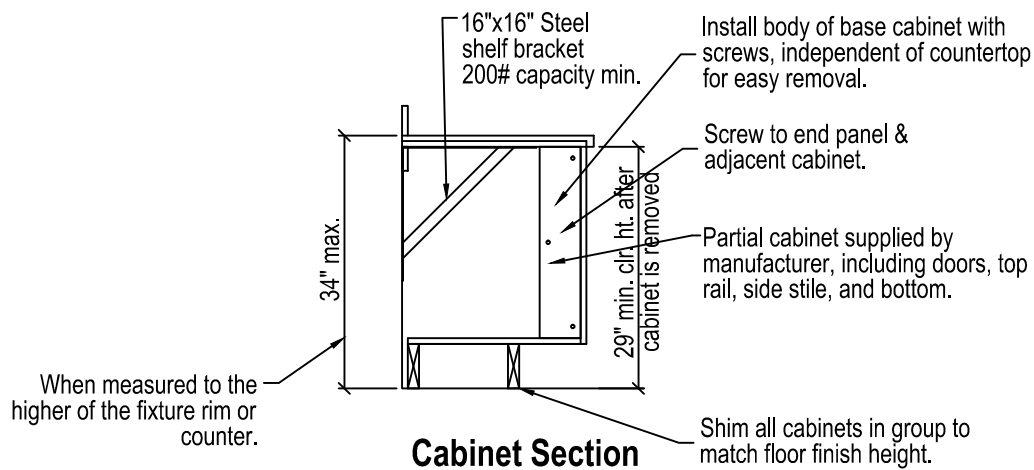
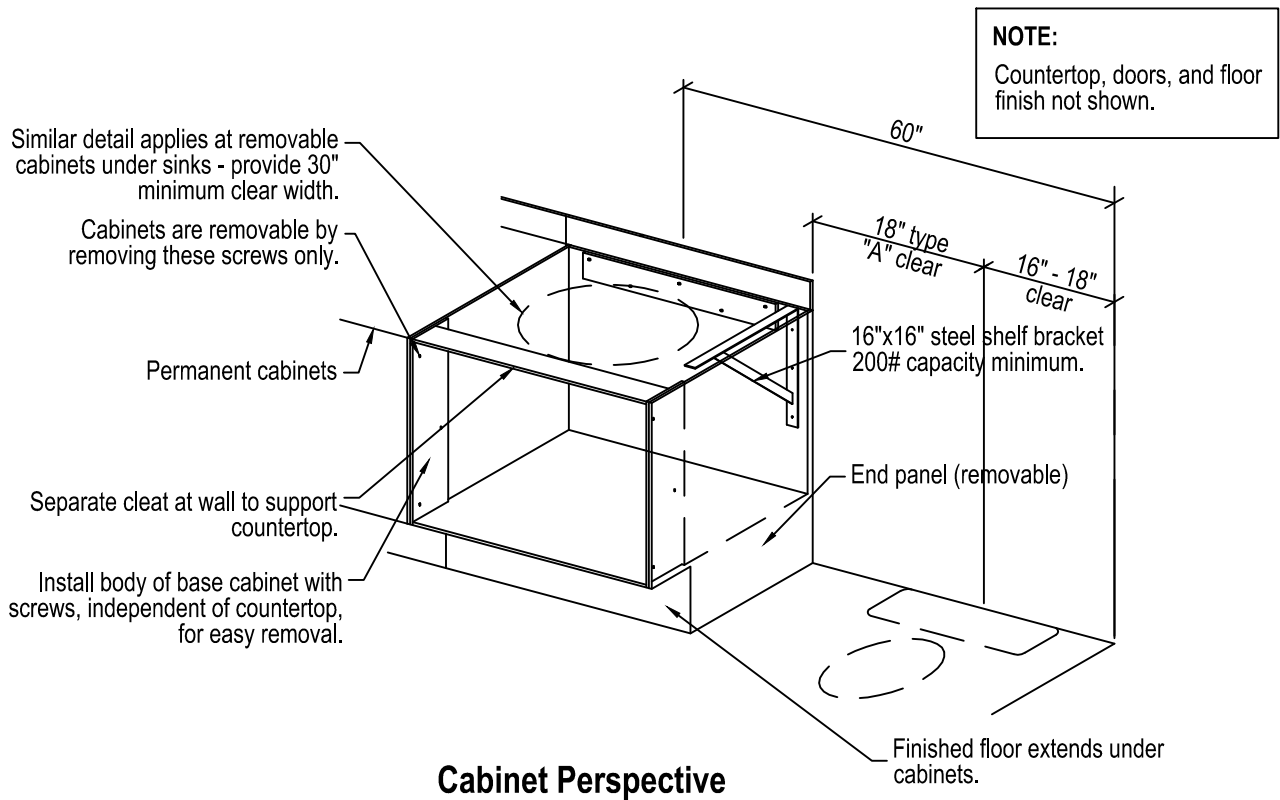
**East Wall Interior Elevation**

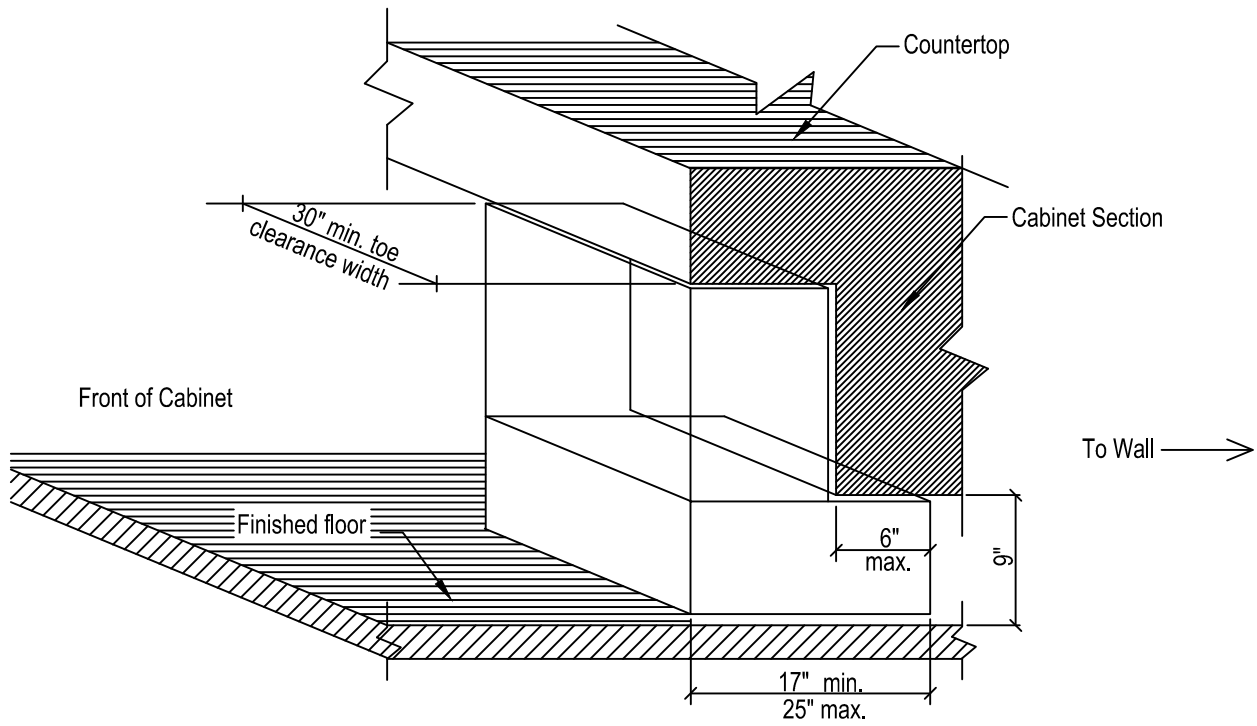


**South Wall Interior Elevation  
(Bathtub Head end wall)**

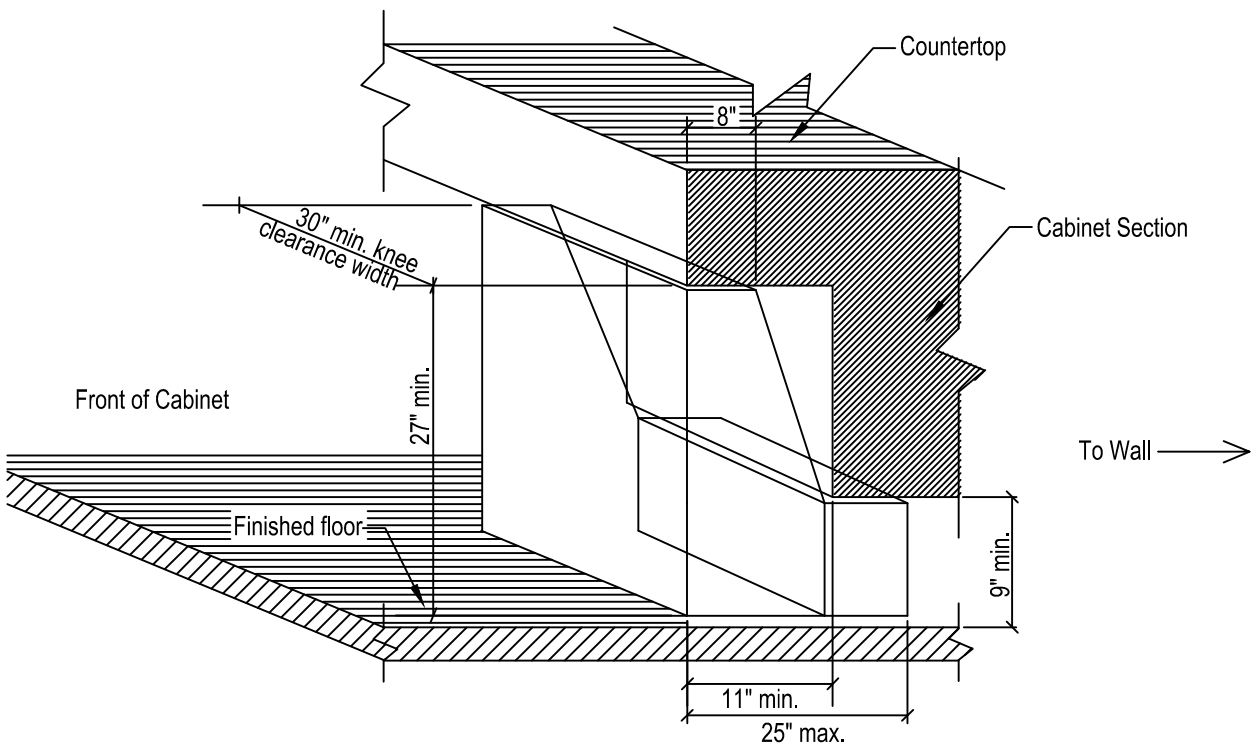


**West Wall Interior Elevation  
(Bathtub back wall)**





**Toe Clearance**



**Knee Clearance**