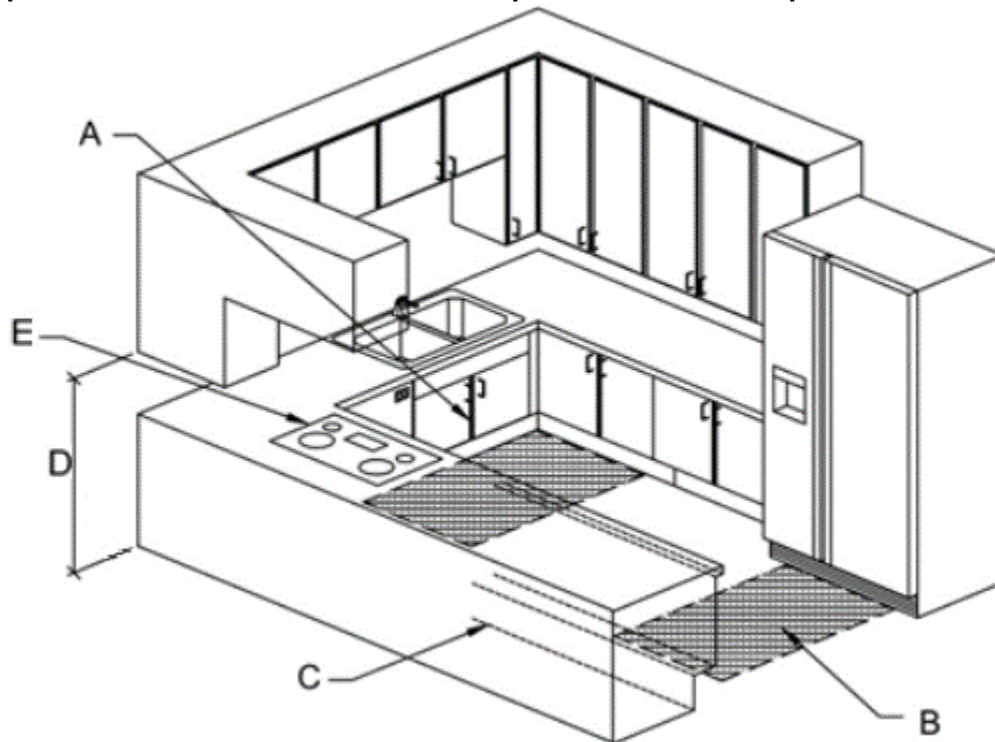


This Tip Sheet reflects code requirements of the 2015 International Residential Code (IRC) and/or the 2015 International Building Code (IBC) w/ Washington State Amendments.

This is a three-dimensional sample Kitchen Layout for a residential Type B unit. Compliance with the following code provisions shall be documented on plans submitted for permit. ICC A117.1



- A. Clear floor space for sink:** 30" x 48 clear floor space positioned for parallel approach at sink. Exception: sinks complying with 606 for parallel or forward approach. Centerline of sink aligns with centerline of floor space.
- B. Clear floor space for appliances:** Typical 30" x 48" clear floor space required for parallel or forward approach to all kitchen appliances. Space positioned beyond swing of the dishwasher door.
- C. Clearances:** For U-shaped kitchens, between all opposing counters, base cabinets, countertops, appliances, and walls within kitchen work area shall be 60" minimum. For galley kitchens, clearance between all opposing counters, base cabinets, countertops, appliances, and walls is not less than 40".
- D. Upper cabinet height:** Bottom of upper cabinets shall not be more than 54" maximum above floor.
- E. Clear floor space for range or cook-top:** Clear floor space positioned for parallel or forward approach at range or cook top. Toe and knee clearance provided per Figures 1 and 2 shall be provided when clear floor space is positioned for forward approach.

GENERAL INFORMATION:

- The intent of this Tip Sheet is to provide a general understanding of the code requirements and does not address the subject in great detail.
- Additional information can be obtained from your local [participating jurisdiction](#).

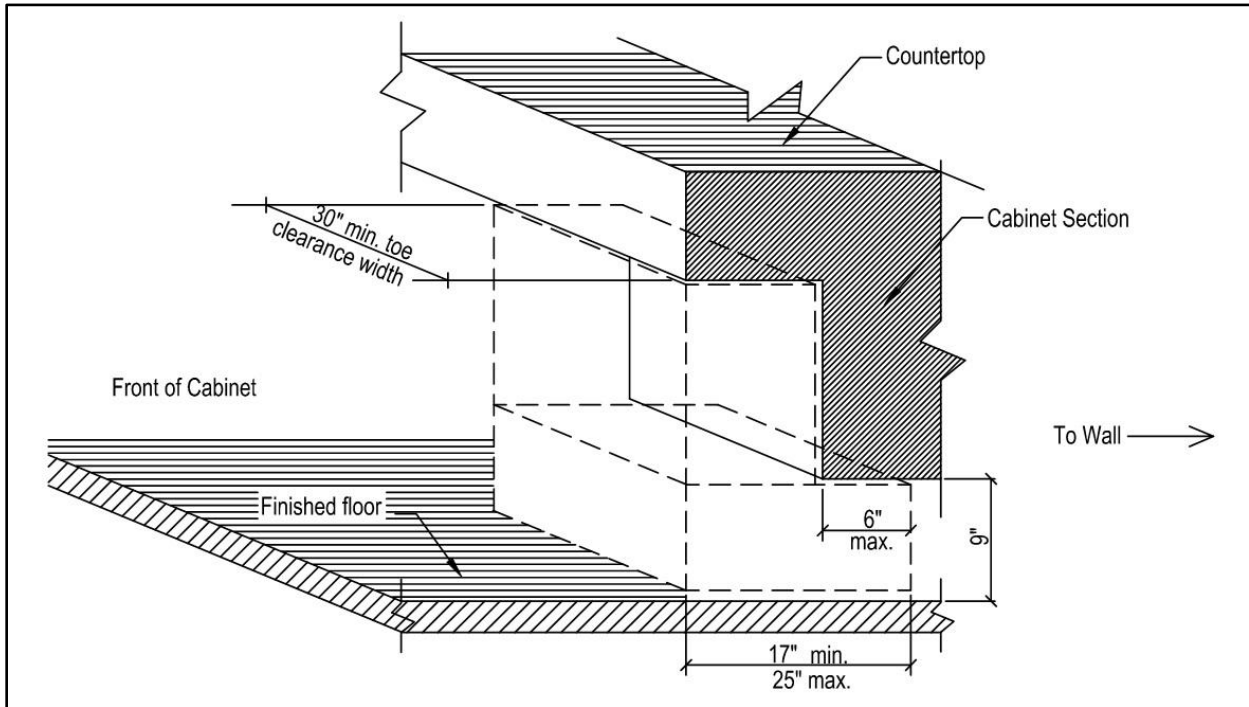


Figure 1 - Toe Clearance

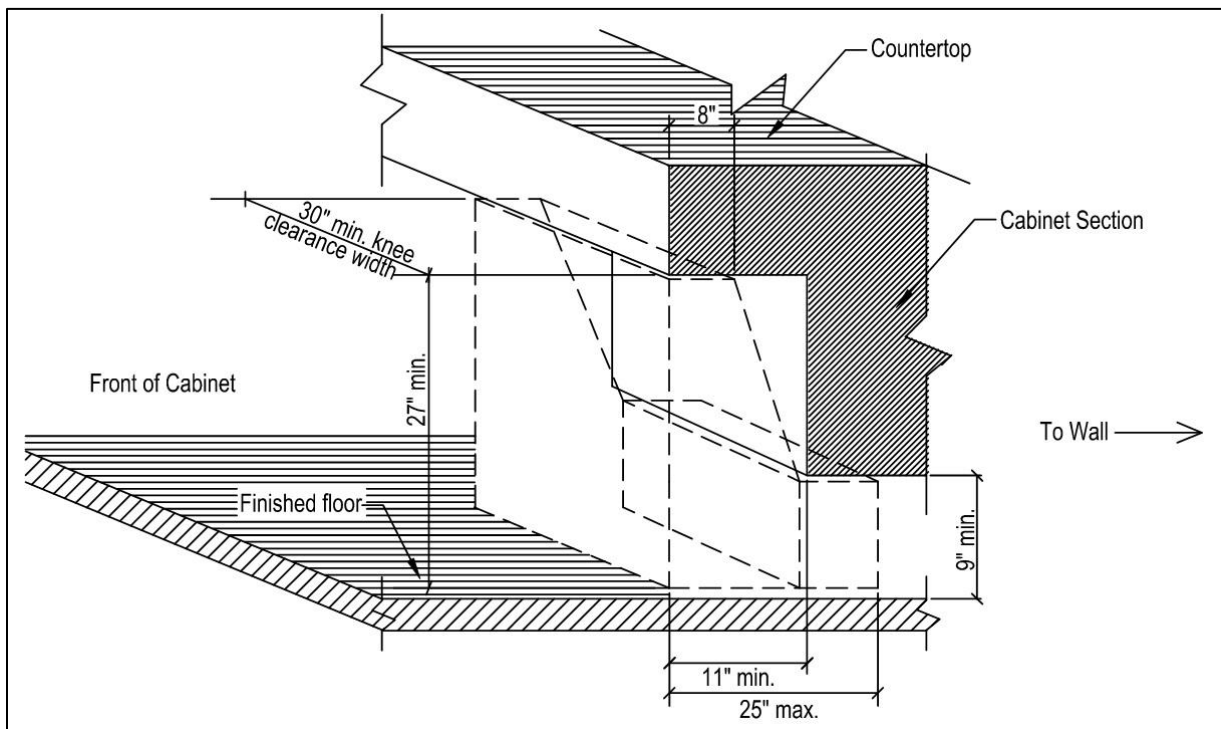


Figure 2 - Knee Clearance

GENERAL INFORMATION:

- The intent of this Tip Sheet is to provide a general understanding of the code requirements and does not address the subject in great detail.
- Additional information can be obtained from your local [participating jurisdiction](#).